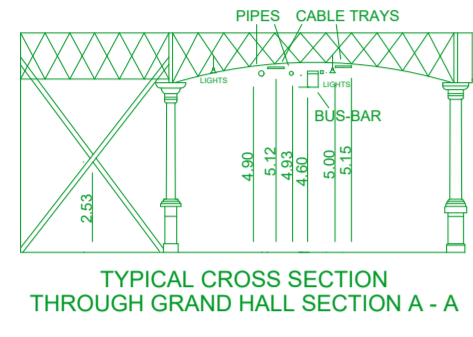


The Meetings Show 2019

26th & 27th June



SHADED AREAS ABOVE BASEMENTS

- Maximum uniform load : 3.2 tonnes per square metre
Maximum axle load : 12 tonnes per axle
- Maximum uniform load : 0.73 tonnes per square metre
Maximum axle load : 4 tonnes per axle
- Maximum uniform load : 2.15 tonnes per square metre
Maximum axle load : 8 tonnes per axle

GRAND & WEST HALL FLOOR LOADING INFORMATION

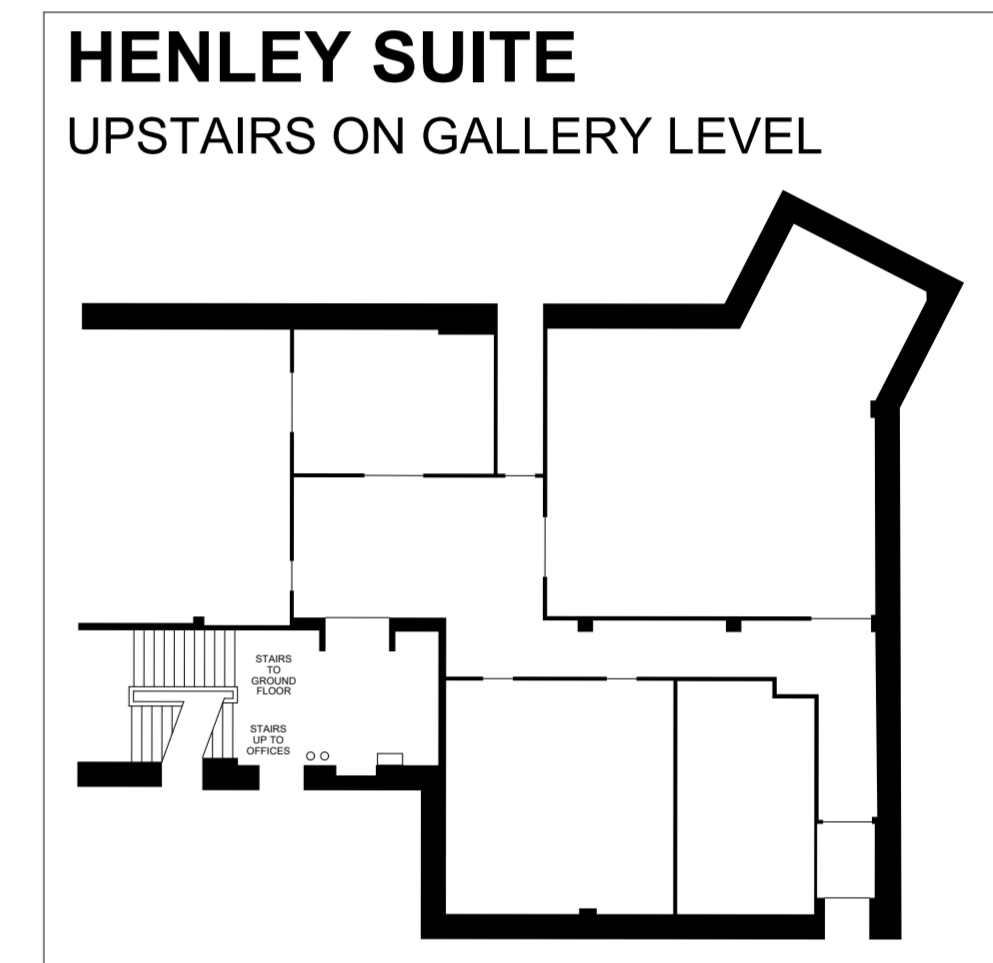
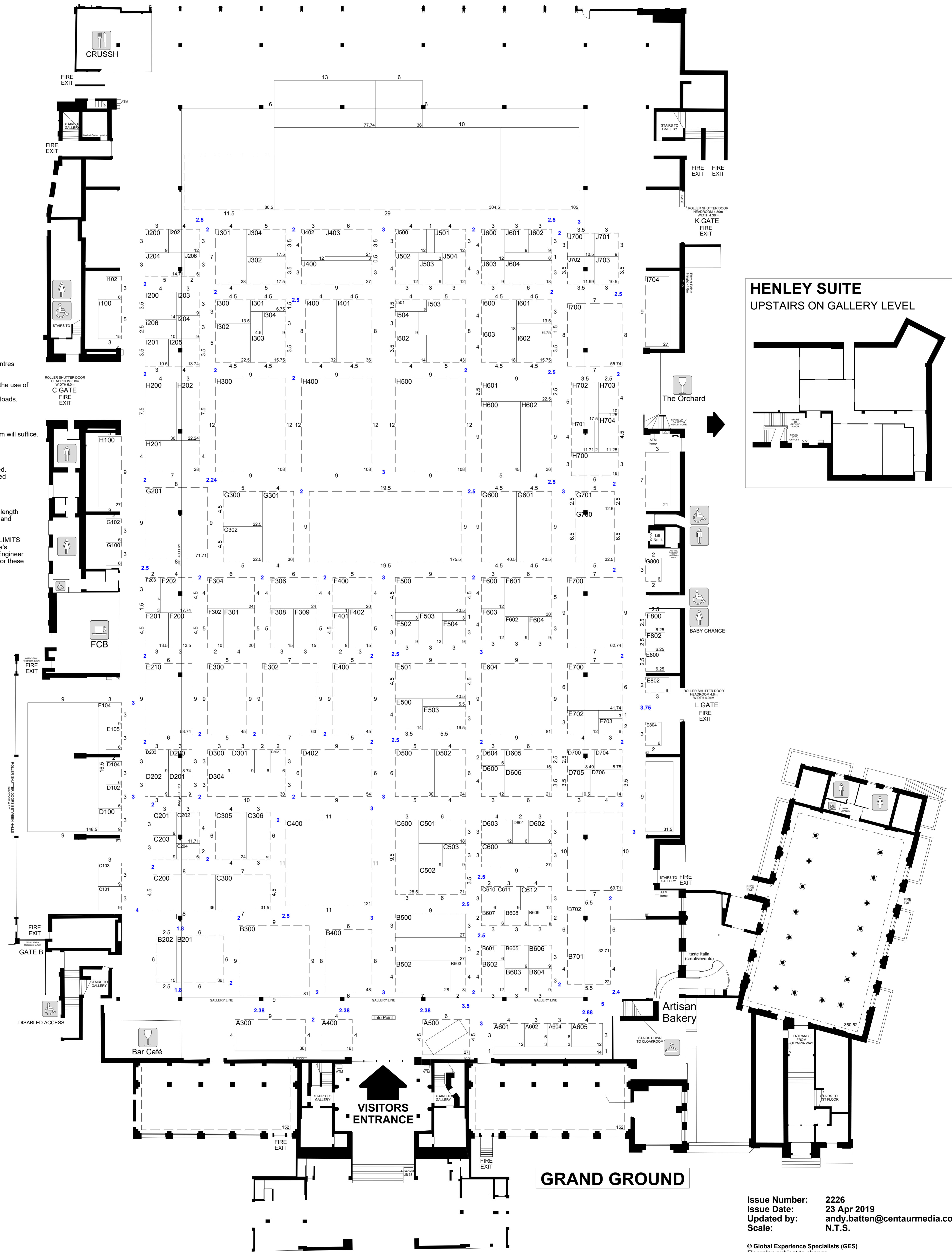
LOCATIONS APART FROM SHADED AREAS

1. UNIFORMLY DISTRIBUTED LOADING (UDL)
Maximum:
32kN per square metre
3.2 tonnes per square metre
672lbs per square foot
2. VEHICLE WHEEL LOADING
Maximum: 6.0 tonnes
Based on: Minimum track (axle length) of 1.8m
Minimum distance between axles of 1.0m at wheel centres
3. POINT LOADING
NB. This does not apply to loads over floor service ducts or the use of crane outriggers anywhere on the floor. See Notes 4 & 5.
Maximum: 6 tonnes at a minimum of 2.0m centres between loads, supported on a base of mild steel plate - 500mm x 500mm x 20mm thick.
4. CRANE OUTRIGGERS : IMPOSED LOADING
Less than 9 tonnes on each outrigger, a base plate of 450mm will suffice.
5. FLOOR SERVICE DUCTS : LOADINGS
a) Uniformly distributed loading as per Note 1.
b) Vehicle wheel loading as per Note 2.
c) Point loadings anywhere on duct covers should be avoided. If this is absolutely unavoidable, the ducts must be fully bridged using a mild steel plate of 500mm x 500mm x 20mm thick. For loads up to 6 tonnes (13,220lbs) the point load must be imposed on the centre of the plate. Where the point load is not centred over the duct, the bridging plate must additionally extend to at least 250mm in length beyond the load point, to cross the nearest duct cover edge and so protect the floor surface.
6. ALL PROPOSED LOADS IN EXCESS OF THE ABOVE LIMITS
All such proposals must be individually accessed by Olympia's Consulting Engineers and approved by the Local Authority Engineer before written approval can be given. There will be a charge for these services, to be payable by the Event Licensee.

- #### FIRE EQUIPMENT
- FP Fire Point
 - HR Hose Reel
 - R Riser
 - C02 Fire Extinguisher - Carbon Dioxide
 - H2O Fire Extinguisher - Water
 - FACP Fire Alarm Call Point

- #### WATER POINT
- WASTE POINT
 - DATUM POINTS 30m grid

- Available
- Shell
- Space
- Reserved
- Issued
- Feature
- Catering
- Seating



Issue Number: 2226
 Issue Date: 23 Apr 2019
 Updated by: andy.batten@centaurmedia.com
 Scale: N.T.S.